

Welcome

CentrePort Canada Way

***Information Session for
Construction of Overpasses and an Interchange***

May 2010

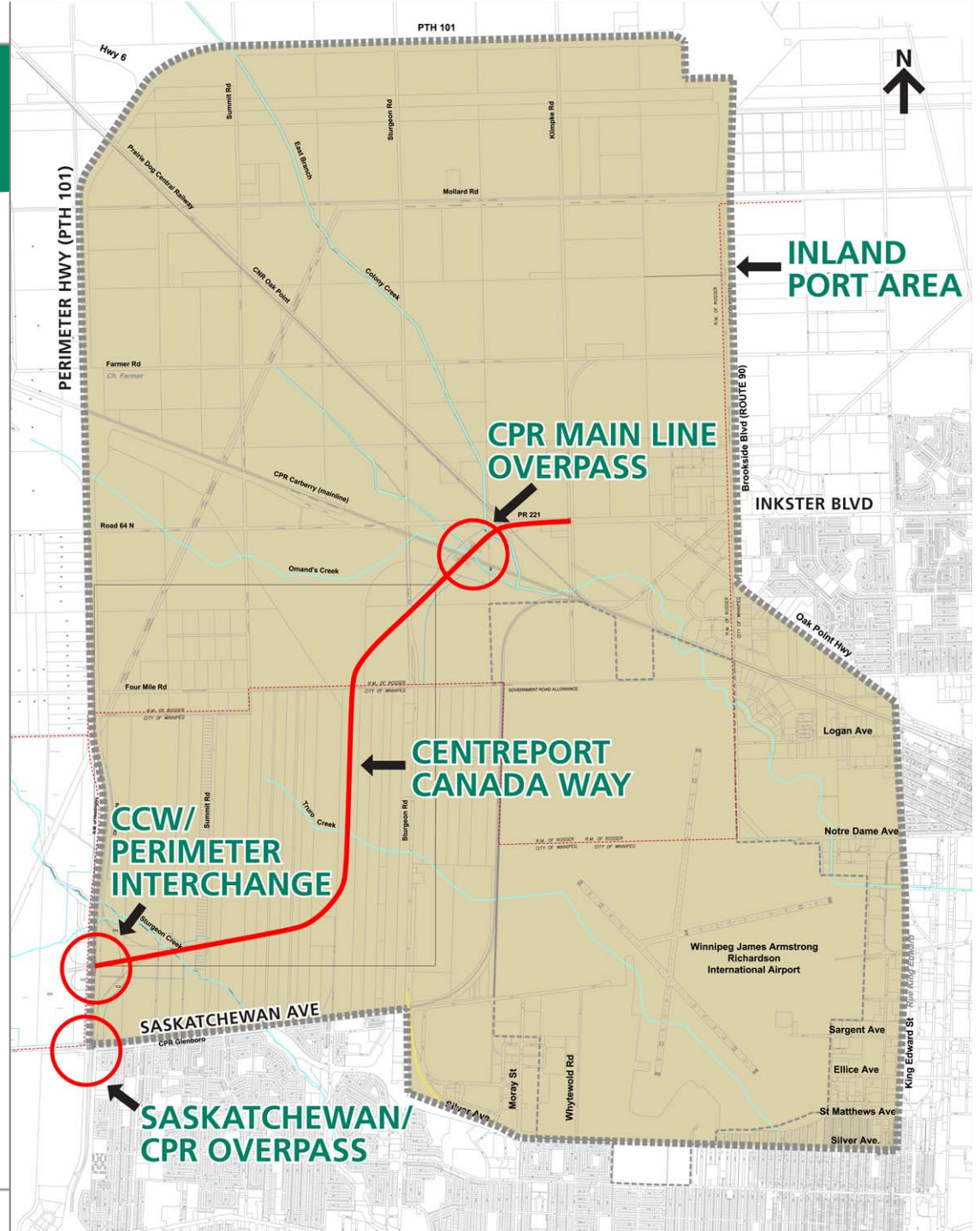
Topics

- Background
- Construction Plans
- Detours
- Noise Barriers
- Timing

Context

1. CentrePort Canada Inland Port
2. CentrePort Canada Way (CCW)
3. Construction of:
 - Saskatchewan/CPR Overpass
 - CCW/Perimeter Interchange
 - CPR Main Line Overpass

Context Map



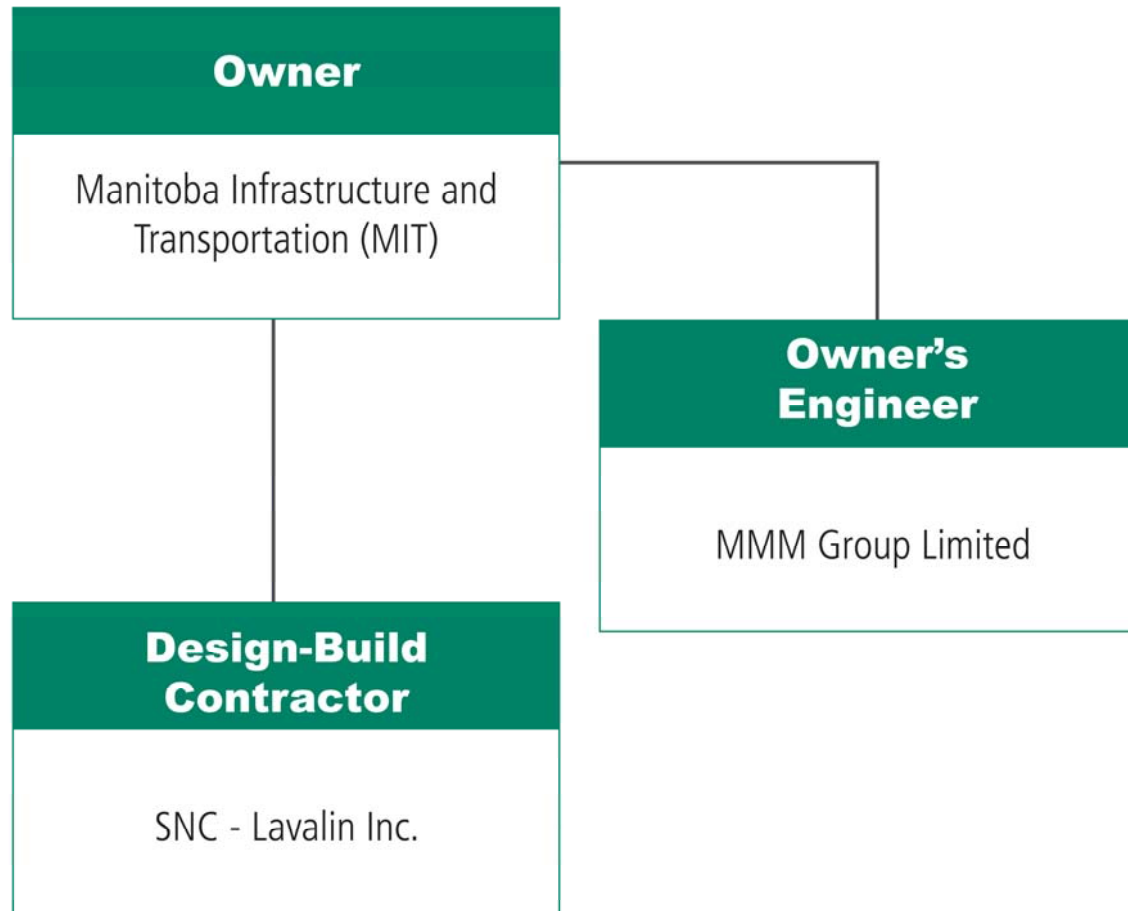
Inland Port

- A logistics centre for the receiving, processing, storing, trans-loading and distribution of domestic and international cargo; located inland, away from coastal ports.
- CentrePort Canada is North America's new inland port with the vision to become Canada's centre for global trade.
- Successful ports are typically served by major roadways, multiple rail companies, and oftentimes an airport.
- Winnipeg's location in the center of Canada and along the Mid-Continent Trade Corridor makes it an ideal location for an inland port.

CentrePort Canada Way

- CentrePort Canada Way will serve as the central roadway “spine” of the CentrePort Canada development zone.
- It will provide an improved connection between Route 90/Inkster Boulevard and the Perimeter Highway.
- This new road will also be a link in the Pacific Gateway Corridor, connecting the ports of the Pacific coast to the rest of Canada.

Process



Pre-Construction Plan



Manitoba
1-800-268-2689

CENTREPORT CANADA WAY DESIGN BUILD

PRE-CONSTRUCTION STAGE
PUBLIC INFORMATION SESSION
May 2015



Post-Construction Plan



Manitoba
SNC-LAVALIN

CENTREPORT CANADA WAY DESIGN BUILD

POST CONSTRUCTION STAGE
PUBLIC INFORMATION SESSION



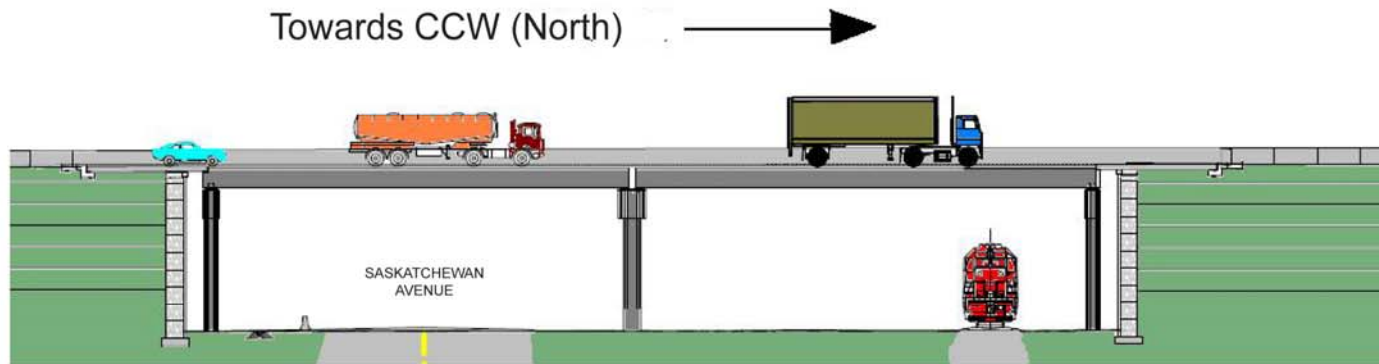
Cross Section of Overpass – CCW passing under Perimeter



Looking West

NORTH BOUND PTH 101 BRIDGE CROSSING CCW

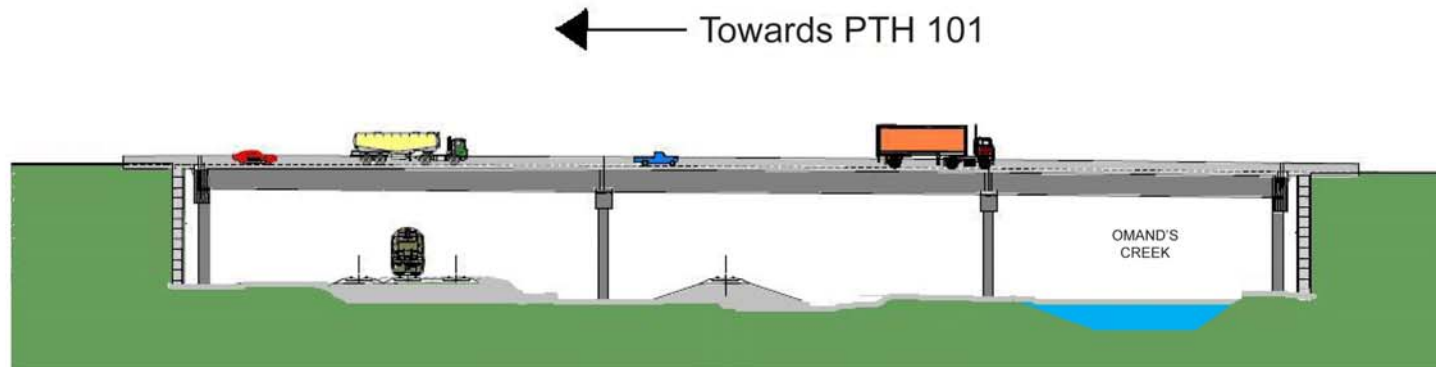
Cross Section of Overpass - Saskatchewan Avenue passing under Perimeter



Looking West

NORTH BOUND PTH 101 BRIDGE OVER
SASKATCHEWAN AVENUE AND CPR GLENBORO

Cross Section of Interchange - CCW crossing above CPR Main Line



Looking Northwest

EAST BOUND CENTREPORT CANADA WAY
OVER CPR CARBERRY AND OMAND'S CREEK

Alternative Routes

- Saskatchewan Avenue crossing under the Perimeter
- Summit Road connection between CCW & Saskatchewan



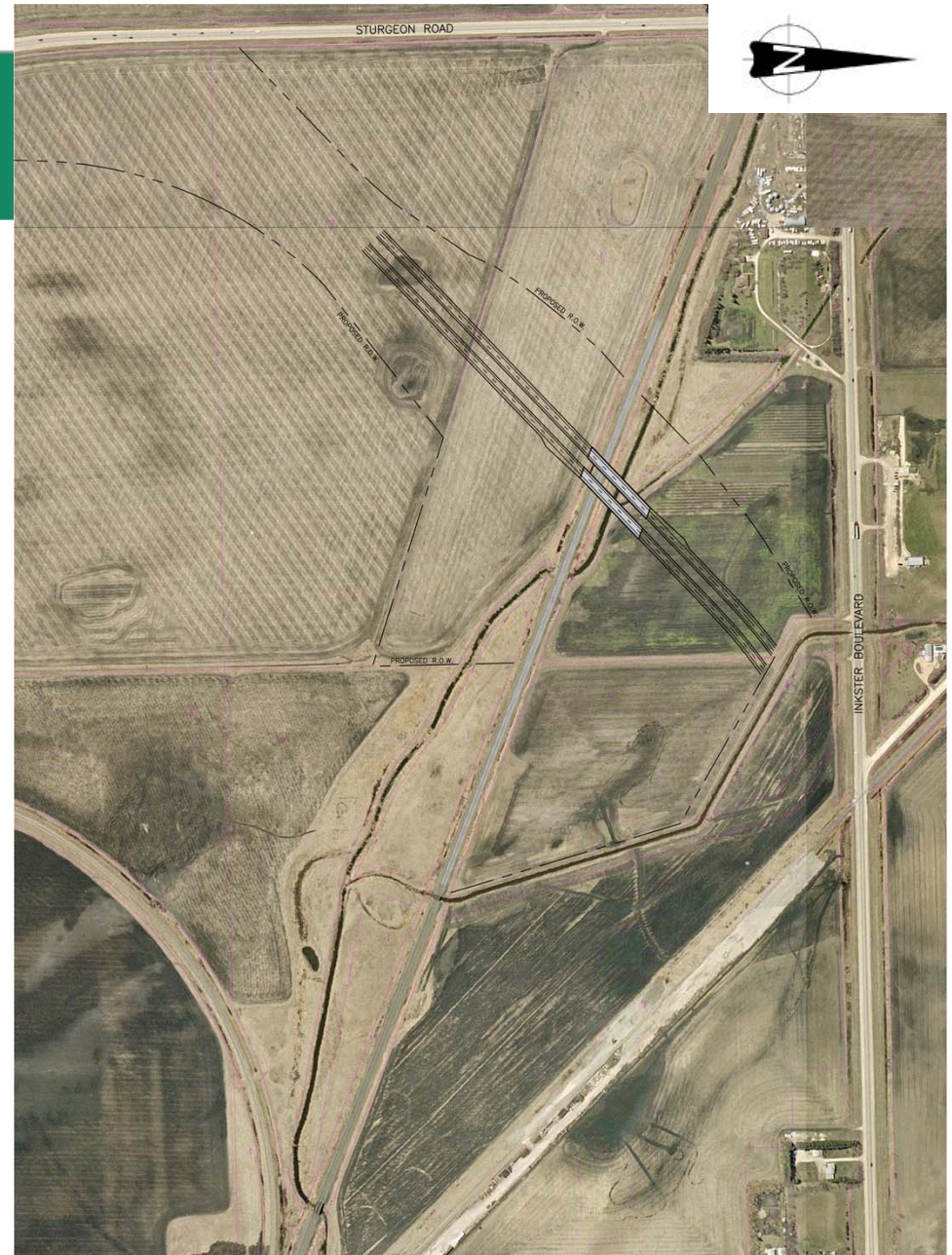
Alternative Routes

- Access to farm fields west of Perimeter
- Access to Optimist Park from Summit Road

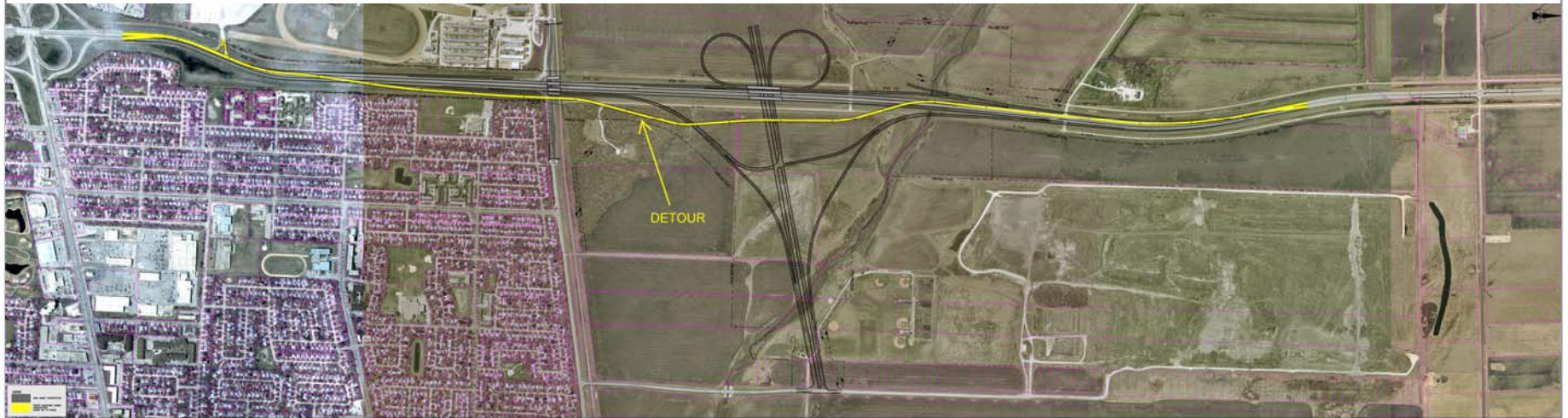


CPR Overpass

- Crossing of CPR Main Line constructed to the south of Inkster Boulevard
- No impacts on Sturgeon or Inkster



Perimeter Construction Detour

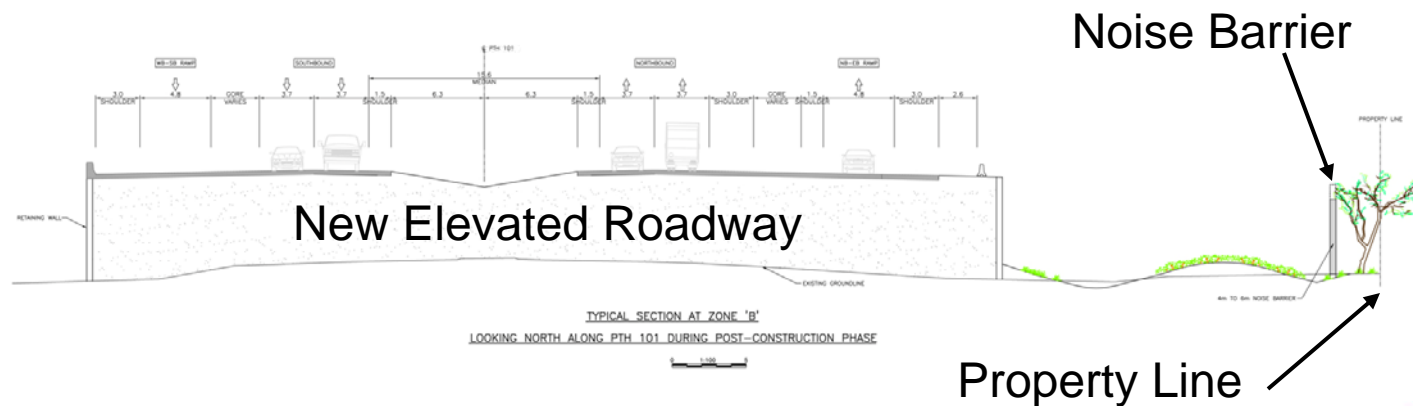
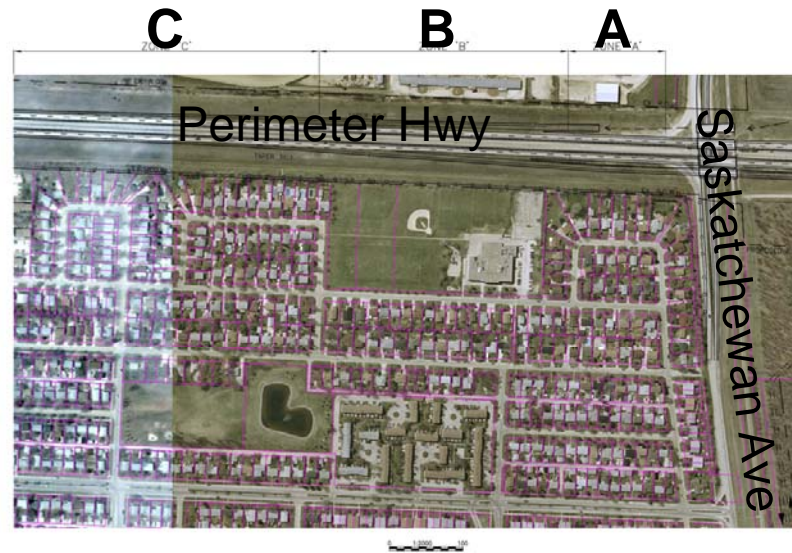


CENTREPORT CANADA WAY DESIGN BUILD

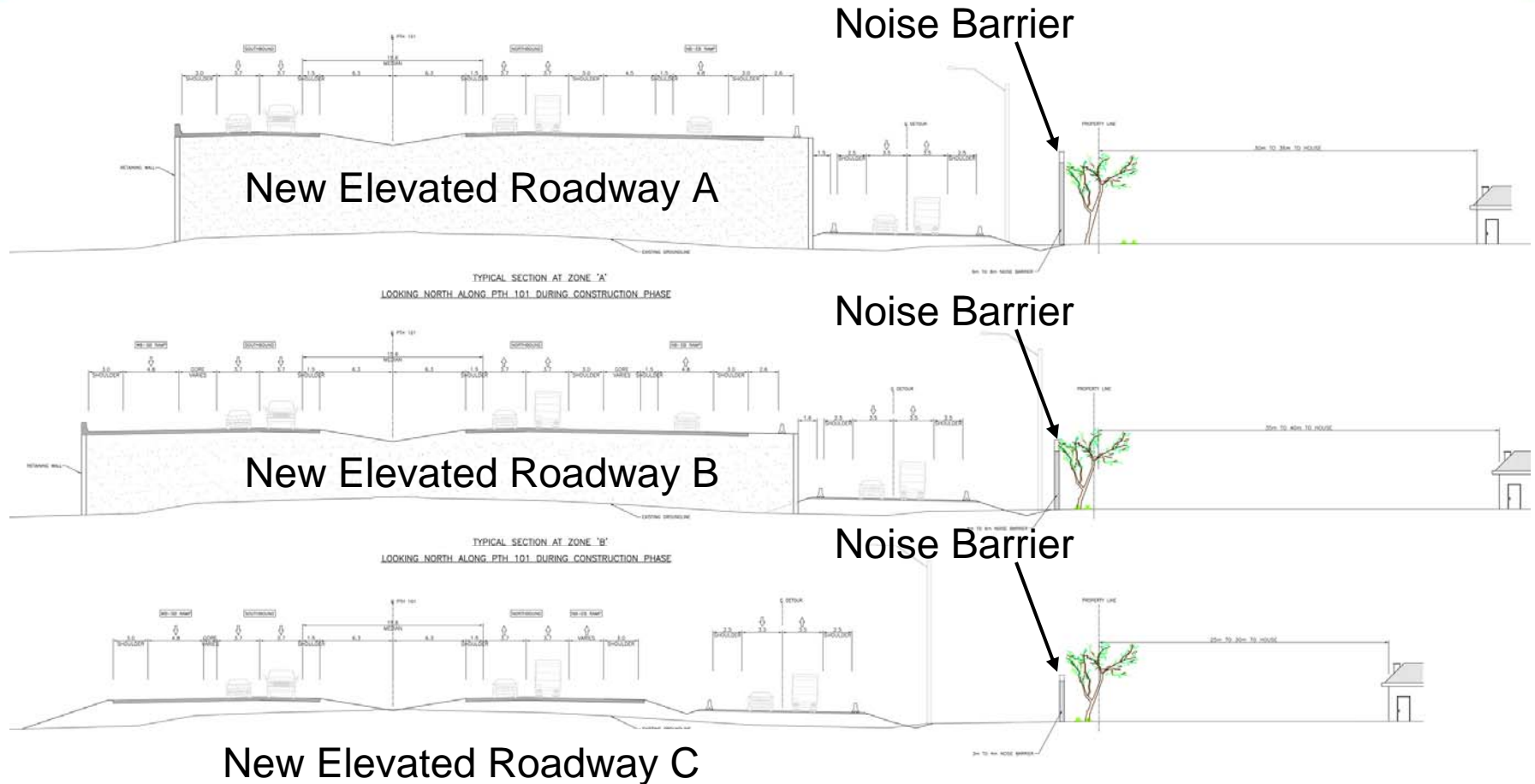
CONSTRUCTION STAGE
PUBLIC INFORMATION SESSION

- 2-lane, paved detour located east of existing roadway
- 26 month construction timeframe

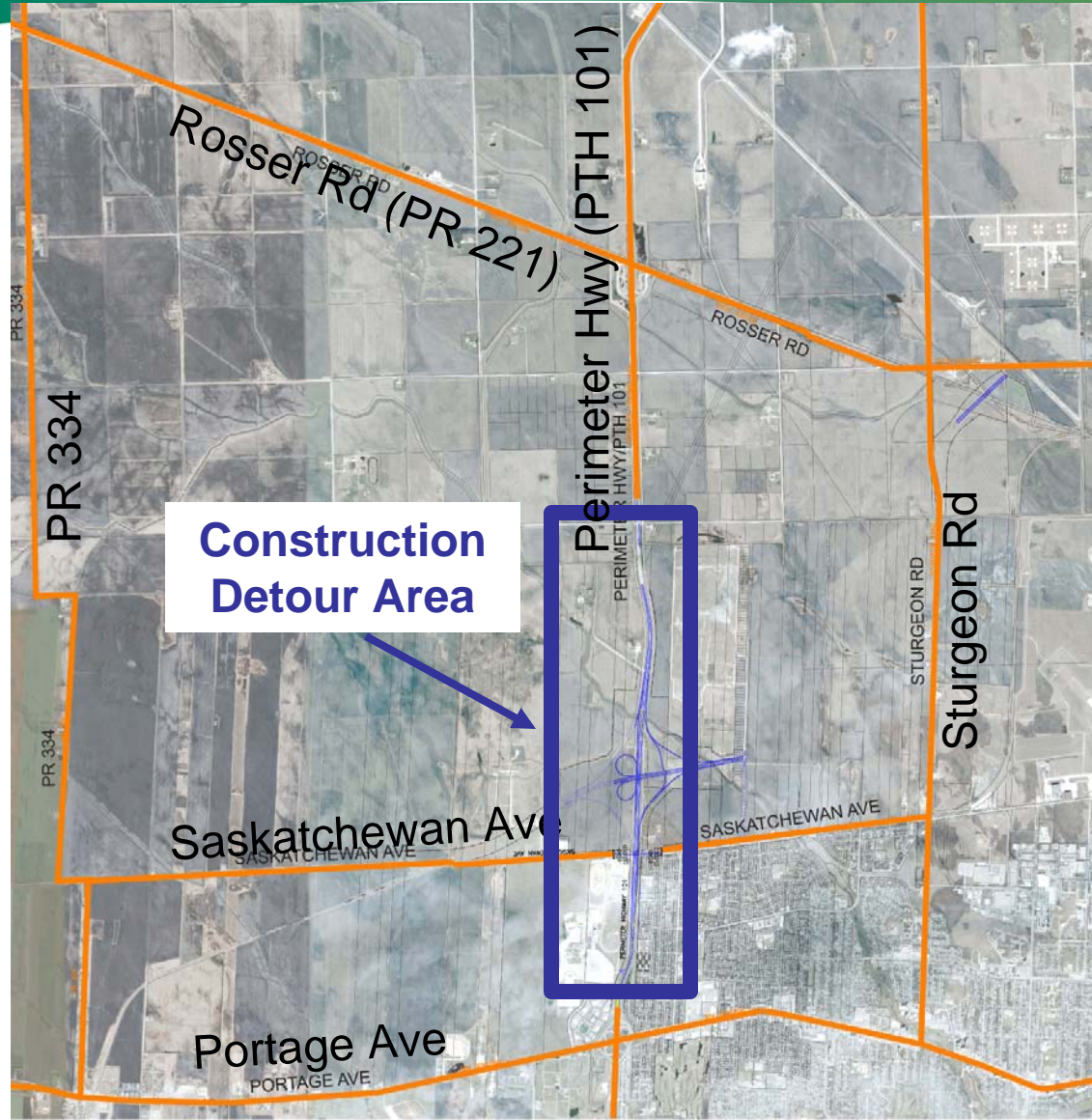
Noise Barrier Plan & Section



Noise Barrier - Zones A, B and C



Alternative Routes Plan



**Construction
Detour Area**



Noise Barrier Examples



Close-up of wood grain finish

Timing

- **2010 - 2012** – Construction complete for overpasses and interchange
- **2014** – CentrePort Canada Way Open

Thank you for attending

For more information about this project you may visit:
www.ccwproject.ca